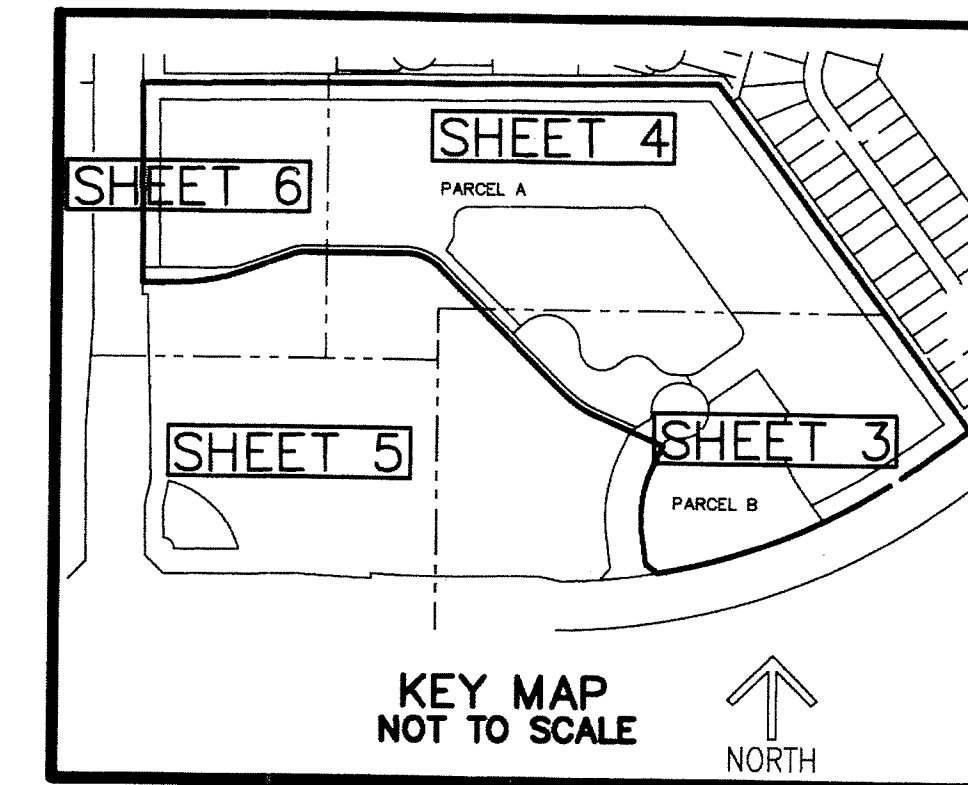


TOWN COMMONS PUD/MUPD

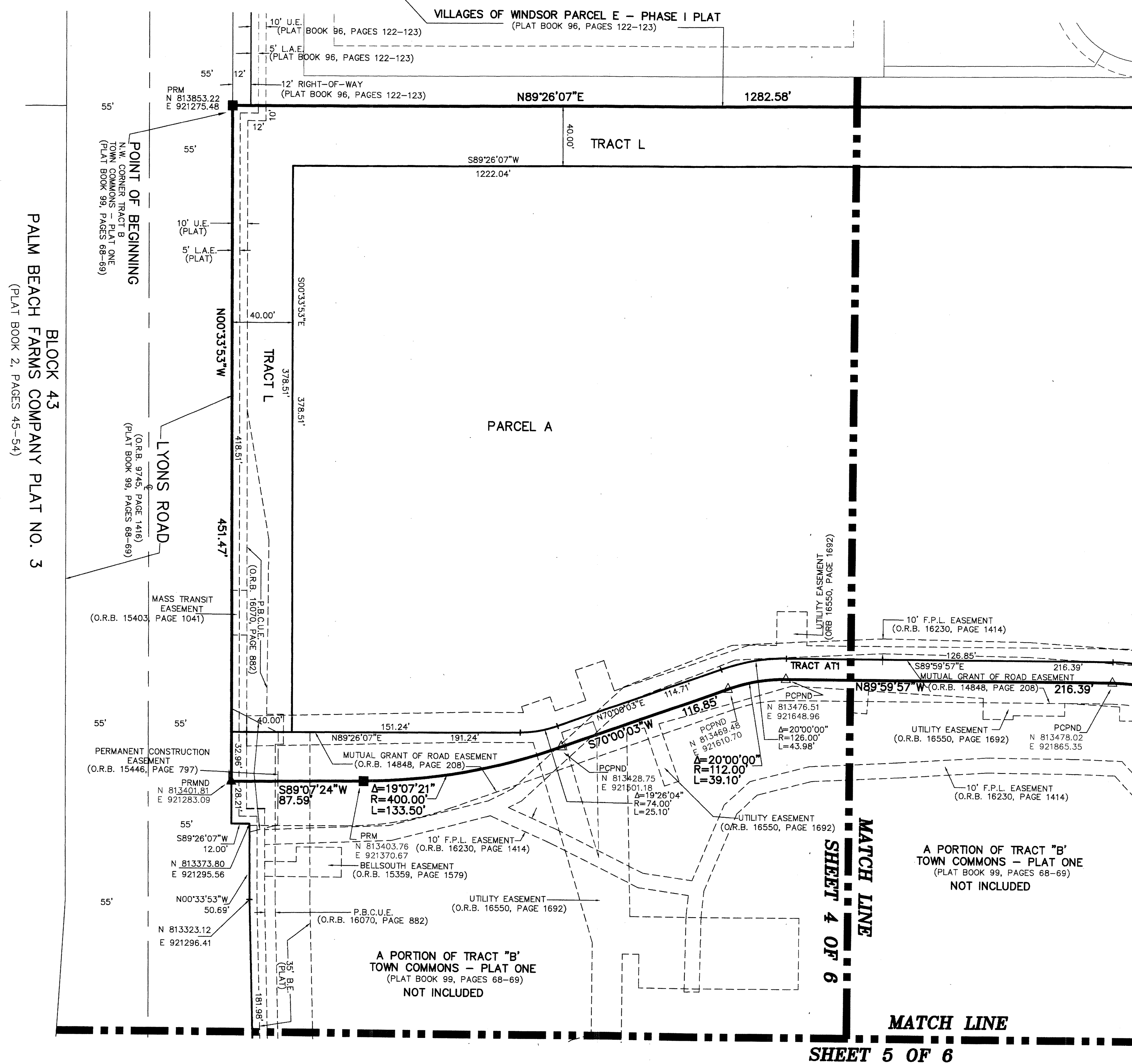
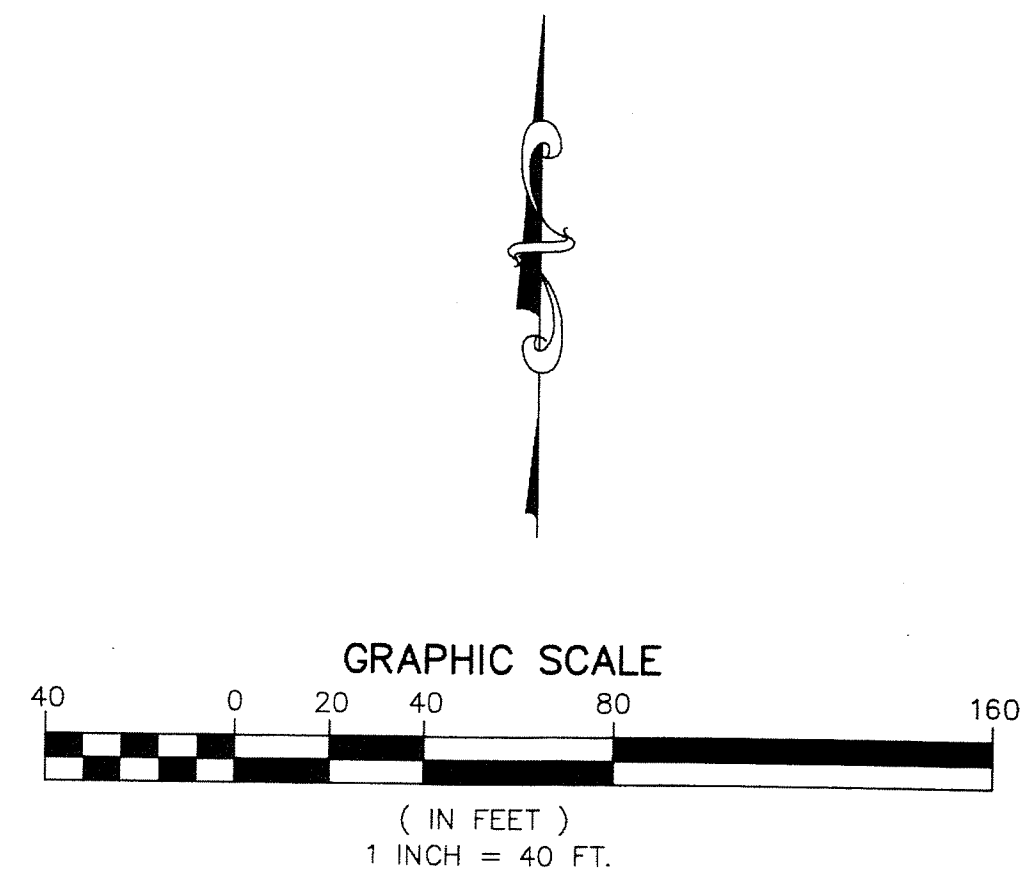
BEING A REPLAT OF TOWN COMMONS-PLAT ONE, ACCORDING TO THE PLAT THEREOF, AS RECORDED IN PLAT BOOK 99, PAGES 68 AND 69, OF THE PUBLIC RECORDS OF PALM BEACH COUNTY, FLORIDA, LYING IN SECTIONS 7 AND 8, TOWNSHIP 45 SOUTH, RANGE 42 EAST, PALM BEACH COUNTY, FLORIDA

THIS INSTRUMENT PREPARED BY
DAVID P. LINDLEY
OF
CAULFIELD and WHEELER, INC.
SURVEYORS - ENGINEERS - PLANNERS
7301-A WEST PALMETTO PARK ROAD, SUITE 100A
BOCA RATON, FLORIDA 33433 - (561)392-1991
JUNE - 2013



11
STATE OF FLORIDA
COUNTY OF PALM BEACH
THIS PLAT WAS FILED FOR
RECORD AT _____ M.
THIS _____ DAY OF _____
A.D. 2013 AND DULY RECORDED
IN PLAT BOOK _____ ON
PAGES _____ AND _____
SHARON R. BOCK
CLERK AND COMPTROLLER
BY: _____
DEPUTY CLERK

SHEET 6 OF 6



BLOCK 43
PALM BEACH FARMS COMPANY PLAT NO. 3
(PLAT BOOK 2, PAGES 45-54)

POINT OF BEGINNING
N.W. CORNER TRACT B
TOWN COMMONS - PLAT ONE
(PLAT BOOK 99, PAGES 68-69)

LYONS ROAD
(O.R.B. 9745, PAGE 1418)
(PLAT BOOK 99, PAGES 68-69)

MASS TRANSIT EASEMENT
(O.R.B. 15403, PAGE 1041)

PERMANENT CONSTRUCTION EASEMENT
(O.R.B. 15446, PAGE 797)

PRMND
N 813401.81
E 921283.09

S89°26'07"W
12.00'

N 813373.80
E 921295.56

N00°33'53"W
50.69'

N 813323.12
E 921296.41

A PORTION OF TRACT "B"
TOWN COMMONS - PLAT ONE
(PLAT BOOK 99, PAGES 68-69)
NOT INCLUDED

A PORTION OF TRACT "B"
TOWN COMMONS - PLAT ONE
(PLAT BOOK 99, PAGES 68-69)
NOT INCLUDED

MATCH LINE
SHEET 4 OF 6

MATCH LINE
SHEET 5 OF 6